

STAINLESS STEEL FULLY THREADED HEX HEAD BOLTS AND NUTS

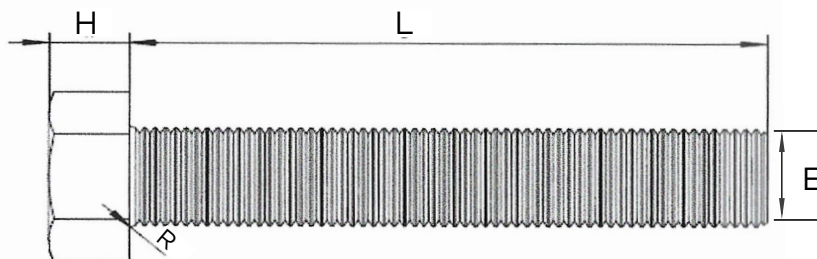
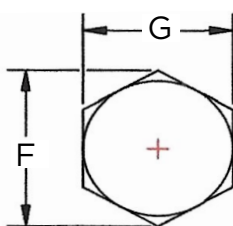
HEX BOLT MODELS - LVHHBSSFT-304; LVHHBSSFT-316

HEX NUT MODELS - LVHNSS-304; LVHNSS-316



DESCRIPTION:

- Bolt dimensions to ANSIB18.2.1
- Hex Nut dimensions ANSIB18.2.2
- Threads to ANSI B1.1 unified inch screw threads class 2A external and class 2B internal
- Stainless Steel Type 304 (Model LVHHBSSFT-304) & Type 316 (Model LVHHBFT-316)
- Bolt dimensions to ANSIB18.2.1
- Hex Nut dimensions ANSIB18.2.2



***Note:** Nuts and bolts are available as a set or can be purchased separately

| MAIN DIMENSIONS (in.) | | | | | | | | |
|-----------------------|-------------------|------------------------|------------------------------|----------------------|------------|----------------------|-------------------|----------------|
| NOMINAL SIZE | BODY DIAMETER "E" | WIDTH ACROSS FLATS "G" | MAX WIDTH ACROSS CORNERS "F" | BOLT HEAD HEIGHT "H" | NUT HEIGHT | RADIUS OF FILLET "R" | THREAD LENGTH "L" | FLANGE SIZE |
| 5/8 x 3 | 0.642 | 15/16 | 1.0863 | 27/64 | 35/64 | 0.02-0.06 | 3.00 | 4 pcs 2"-3" |
| | | | | | | | | 8 pcs 4" |
| 3/4 x 3-1/2 | 0.768 | 1-1/8 | 1.299 | 1/2 | 41/64 | 0.02-0.06 | 3.50 | 8 pcs 5"-8" |
| 7/8 x 4 | 0.895 | 1-5/16 | 1.516 | 37/64 | 3/4 | 0.02-0.06 | 4.00 | 12 pcs 10"-12" |

| PROJECT | APPROVAL STAMP |
|-----------------|--|
| PROJECT: | <input type="checkbox"/> APPROVED |
| ADDRESS: | <input type="checkbox"/> APPROVED AS NOTED |
| ENGINEER: | <input type="checkbox"/> NOT APPROVED |
| SUBMITTAL DATA: | REMARKS: |
| NOTES 1: | |
| NOTES 2: | |