

DOUBLE OFFSET HANGER AND RESTRAINT

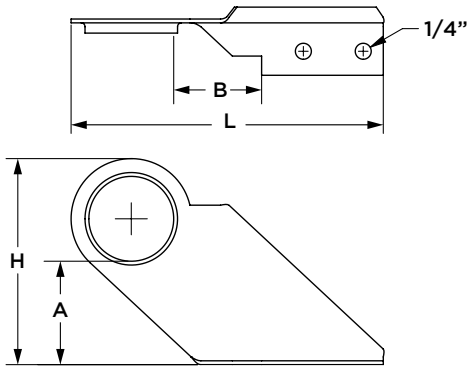
MODEL LV-773



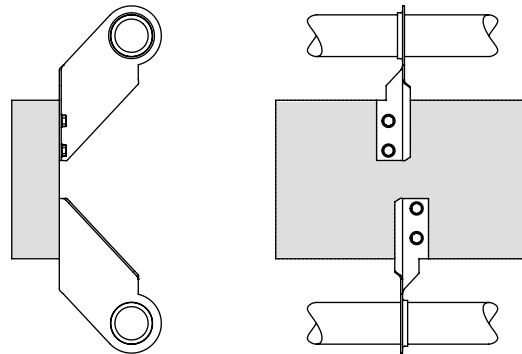
The Lansdale Model LV773 Double Offset Hanger and Restraint is used to support horizontal CPVC pipe in a fire sprinkler system, when the piping is running along- side the supporting structure. This hanger comes with, and is UL Listed, with #14 x 1 hex head self- tapping screws for installations into wood beams with a minimum thickness of 1". The LV773 can also be installed into concrete, steel and other structural members as long as listed fasteners are used and it is installed in accordance with NFPA requirements.

DESCRIPTION:

- **Size:** 3/4" - 1" CPVC Pipe
- **Material:** Carbon Steel
- **Finish:** Pre-Galvanized to ASTM A563
- Beveled Edge in accordance with NFPA 13 requirements
- Pipe is offset 1/2" from structural attachment



TYPICAL INSTALLATION



DOUBLE OFFSET HANGER AND RESTRAINT (in.)					
CPVC Pipe Size	A	B	H	L	Max. Hanger Spacing (ft.)
3/4	1-1/2	1-1/2	3-1/8	5-1/8	5-1/2
1	1-1/2	1-1/2	3-1/8	5-1/8	6

PROJECT	APPROVAL STAMP
PROJECT:	<input type="checkbox"/> APPROVED
ADDRESS:	<input type="checkbox"/> APPROVED AS NOTED
ENGINEER:	<input type="checkbox"/> NOT APPROVED
SUBMITTAL DATA:	REMARKS:
NOTES 1:	
NOTES 2:	