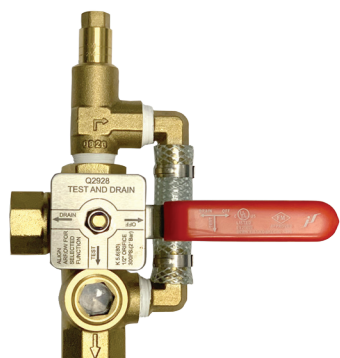


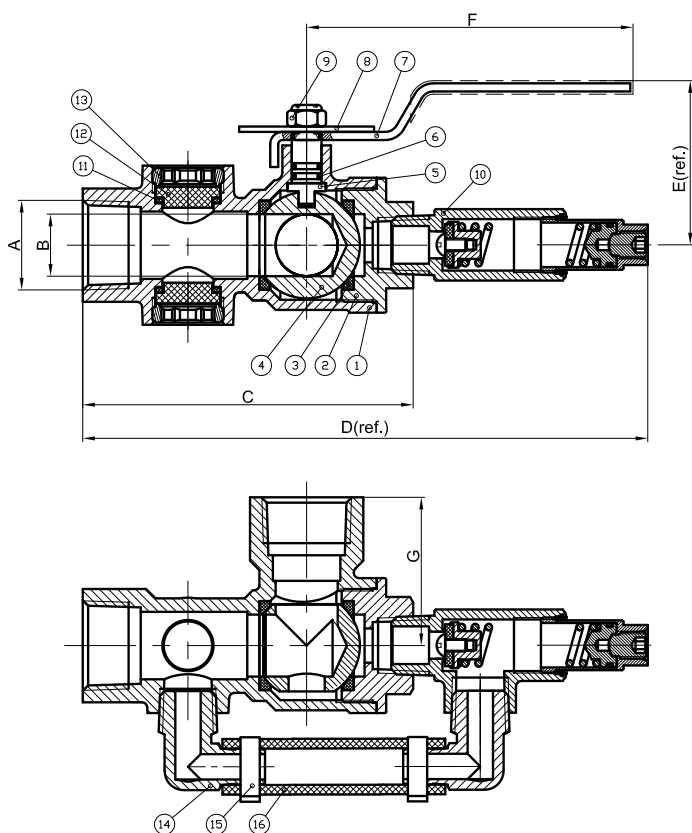
# ANGLE TEST & DRAIN WITH PRV

MODEL LVATD-R



## FEATURES:

- UL Listed and FM Approved
- Multi-function device allowing for system test (5.6K), system or floor drain, and "off" position
- Field adjustable pressure relief valve 175 PSI – 310 PSI
- Integrated sight glass
- Angle design for ease of installation in difficult locations
- Rated for 300 PSI
- Complies with all requirements of NFPA 13
- Designed to relieve excess pressure with built in PRV valve
- Test and drain with optional PRV, available nominal K-Factor: 2.8, 4.2, 5.6, 8.0, 11.2, 14.0 (available on 1-1/4" - 2" size units only), and 25.2 (available on 1-1/2" and 2" size units only)



## MATERIAL LIST

NUMBER	DESCRIPTION	MATERIAL
1	Body	C37700
2	Cap	C37700
3	Seal	PTFE
4	Ball	C37700
5	Stem	C37700
6	O-Ring	NBR
7	Lever	Steel
8	Indicator Plate	Steel
9	Nut	Steel
10	Adjustable Relief Valve	Sub-Assembly
11	Washer	NBR
12	Sight Glass	Lexan
13	Retaining Ring	C37700

A (NPT)	B	C	D (REF)	E	F	G
3/4"	0.67	4.21	7.64	2.2	4.76	1.81
1"	0.91	4.82	8.23	2.4	4.76	2.17
1-1/4"	1.18	5.26	8.66	2.83	5.55	2.36
1-1/2"	1.5	5.28	9.09	3.22	6.34	2.56
2"	1.85	6.02	9.45	3.43	6.34	2.83

PROJECT		APPROVAL STAMP	
PROJECT:		<input type="checkbox"/> APPROVED	
ADDRESS:		<input type="checkbox"/> APPROVED AS NOTED	
ENGINEER:		<input type="checkbox"/> NOT APPROVED	
SUBMITTAL DATA:		REMARKS:	
NOTES 1:			
NOTES 2:			